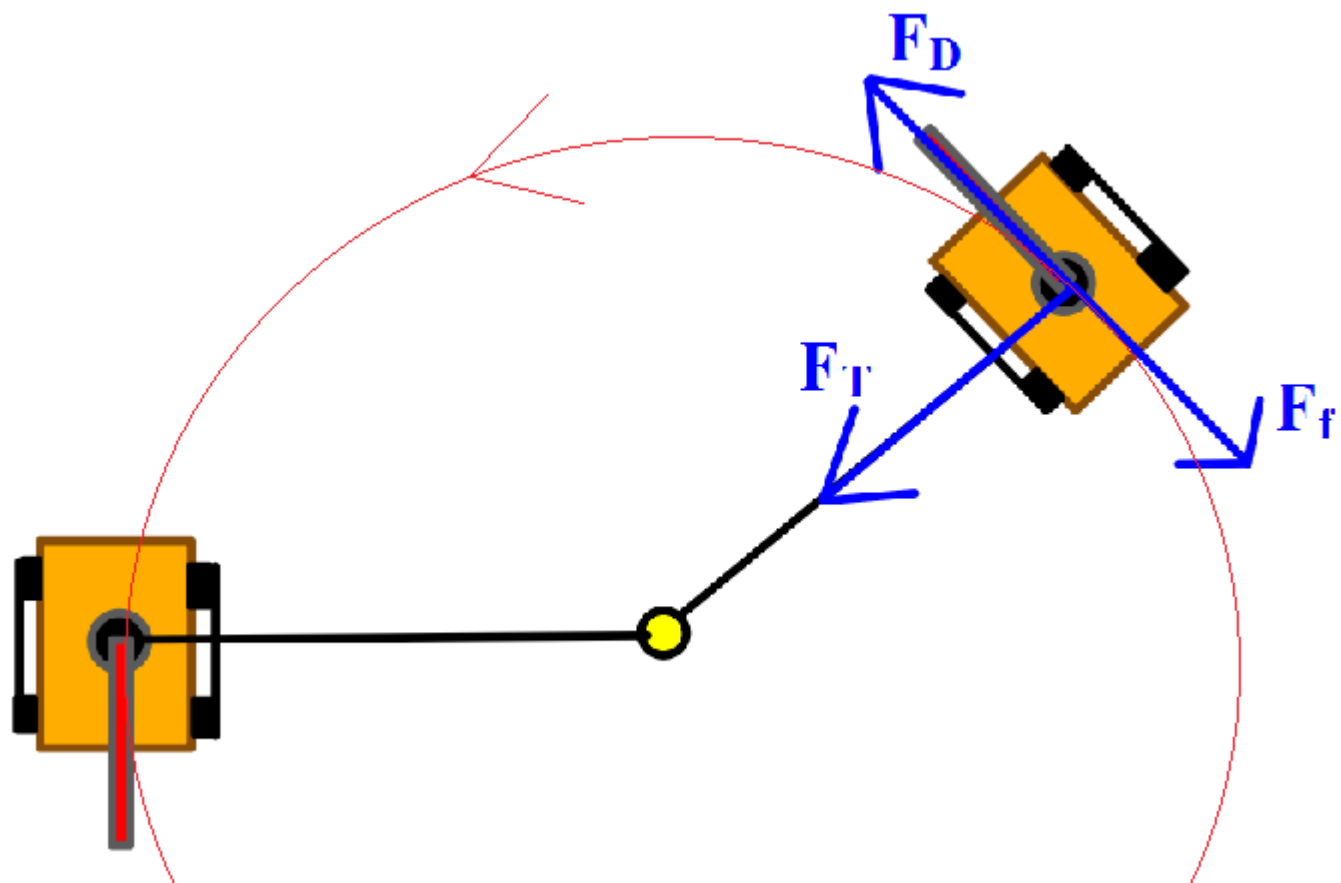


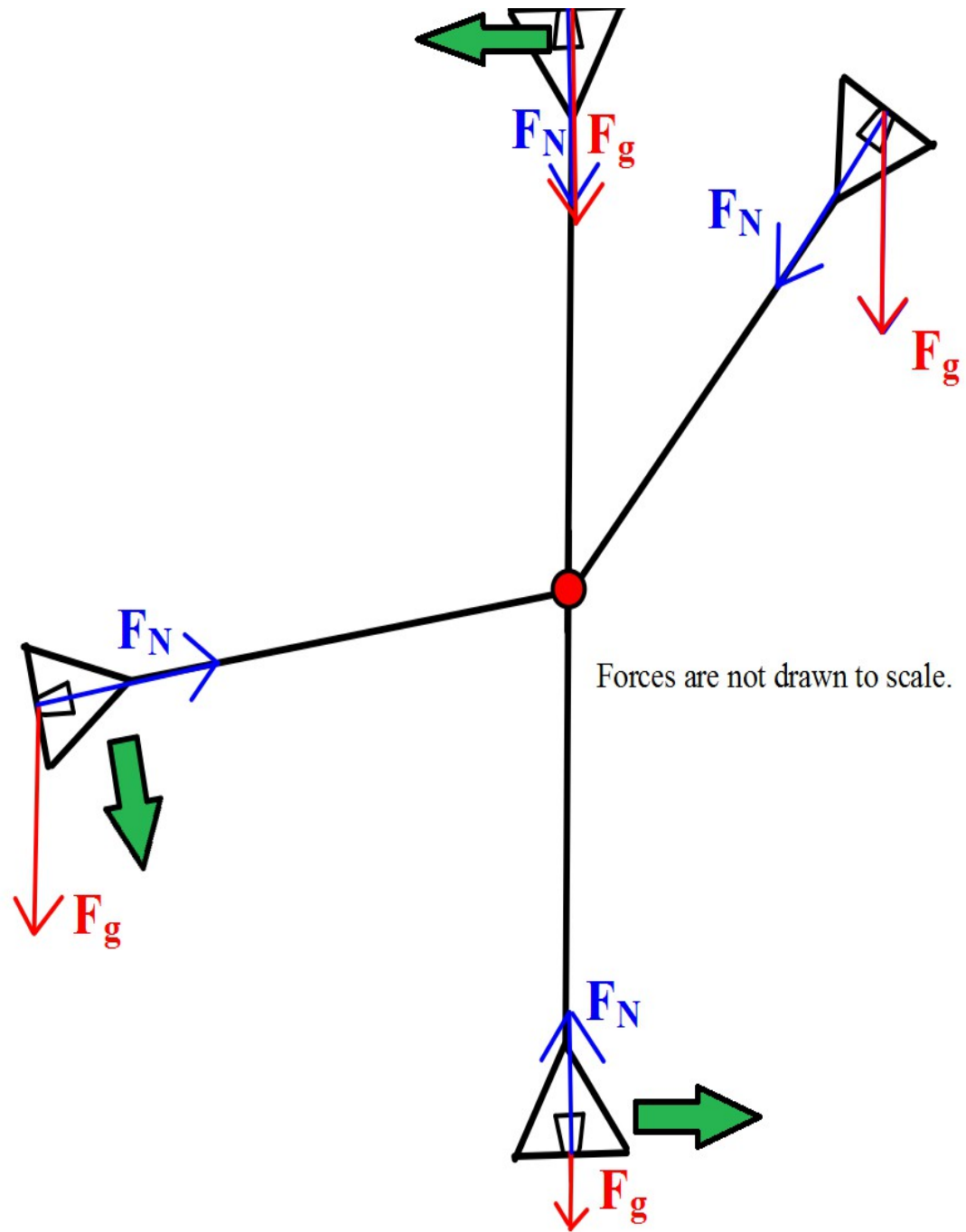
Circular

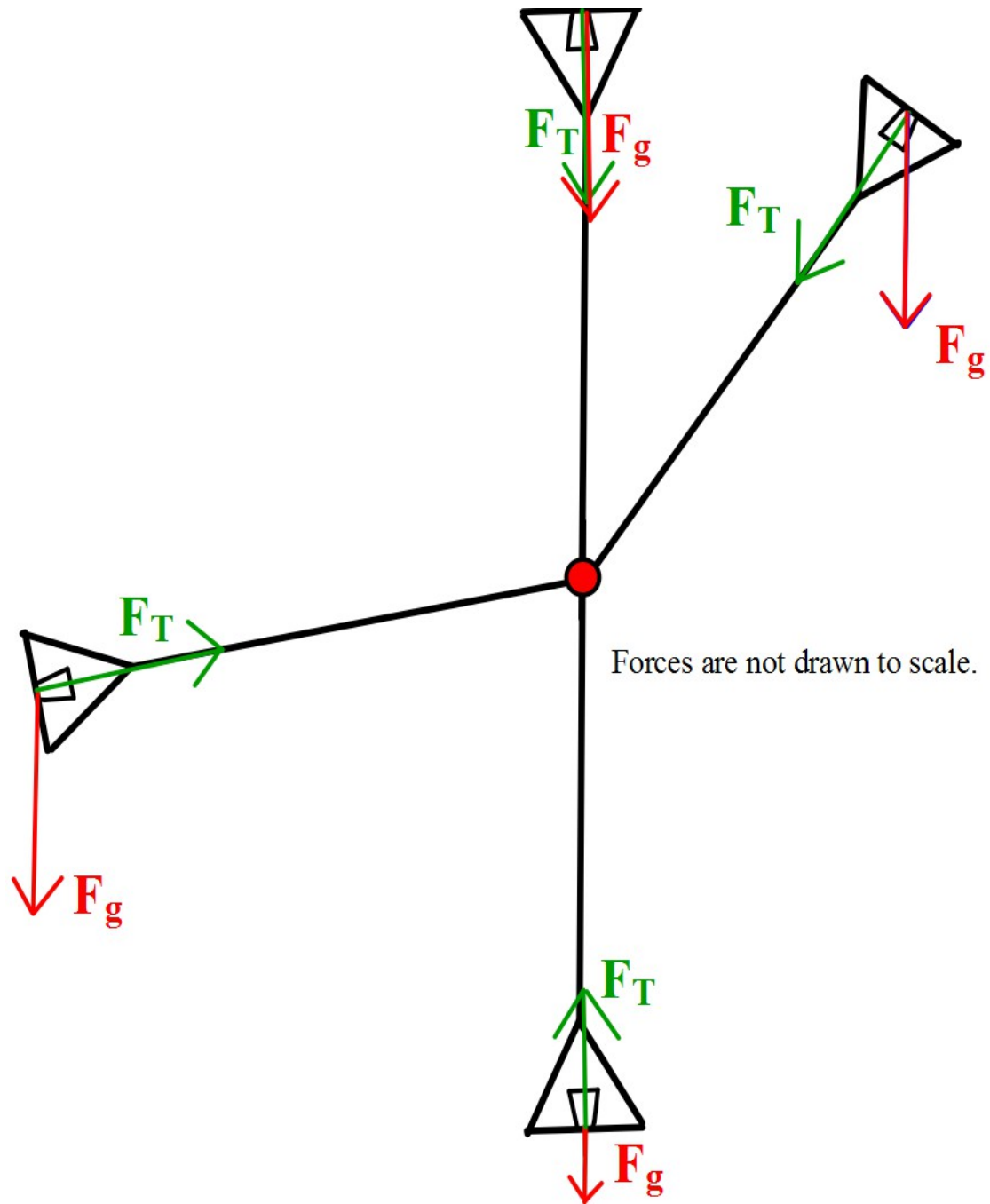
Motion



Centripetal force is the force that acts towards the center of the circle, that keeps the object moving in a circle.

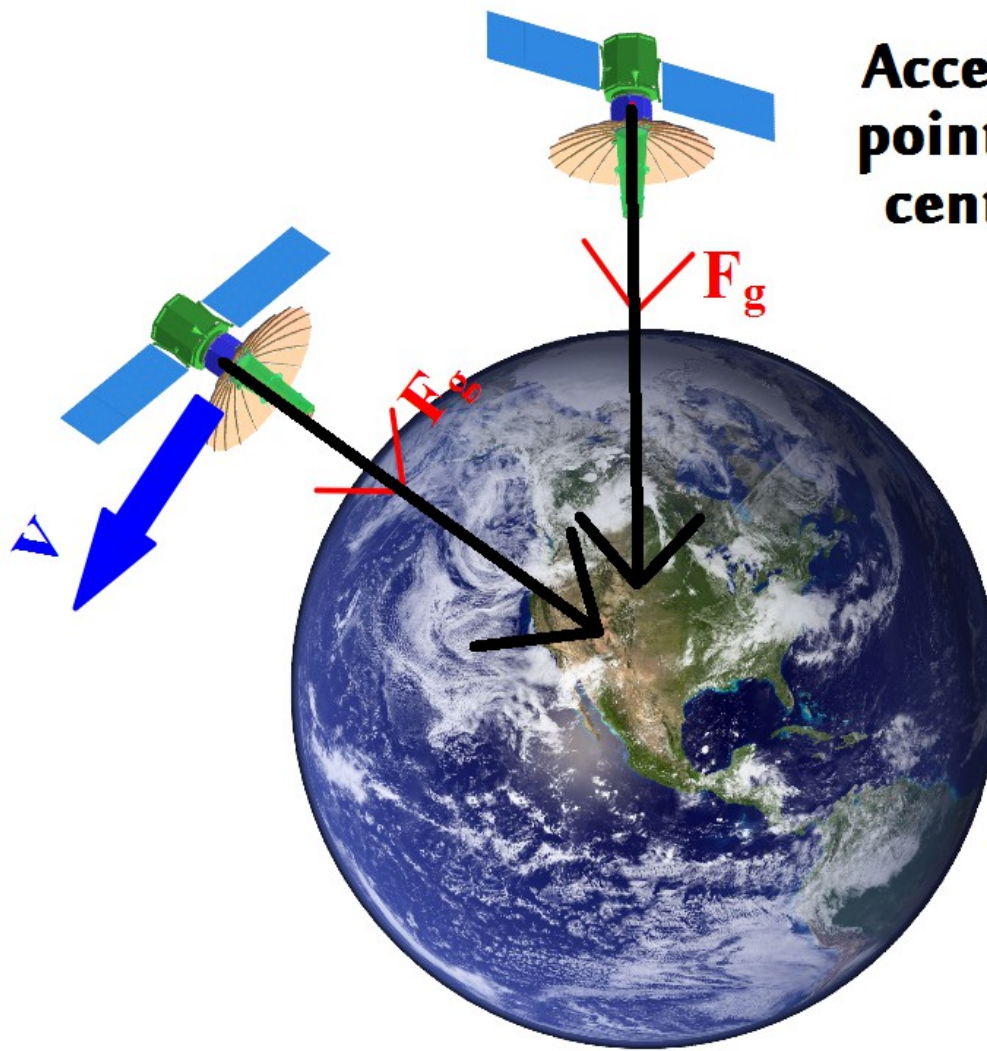






~~F_c~~

NEVER label F_c



**Acceleration
pointed towards
center of circle**

$$F_c = \frac{mv^2}{r}$$

F_c = centripetal force (N)

m = mass (kg)

v = velocity (m/s)

r = radius (m)

$$a_c = \frac{v^2}{r}$$

a_c = centripetal acceleration
(m/s^2 or m/s/s)

v = velocity (m/s)

r = radius (m)

